



TIMEPOINT™

Everyone knows that tight project control is the best way to eliminate project errors and cost overruns that eat into your margin and can ruin projects even before they reach completion. To succeed, projects must be managed in real-time, with accurate data.

TimePoint from Eclipse delivers project management tools to run projects, manage time, equipment and employees within the Microsoft Dynamics application.

Most importantly, project and team leaders can access web-based project control tools to forecast and manage resources; viewing actuals, updating forecasts and feeding this information directly against projects in the core application.

“ The greatest benefit of TimePoint comes from its live environment, which means that staff can enter in timesheets and project managers have an instant updated plan that takes that data into account. ”

*Bill Rue, Chief Information Officer
HASSELL*

Time & expense entry are also entered directly over the web, eliminating collection issues and the need to rekey data.

TimePoint will hand you back the project control you need with high visibility over billing, resource scheduling, contract management, time & expense sheet entry and a range of reporting options.

100% Microsoft technology, TimePoint is built on the Microsoft Dynamics AX platform and offers tight integration with Microsoft Office Project Server for project planning and other familiar productivity software including Microsoft Office Excel, Microsoft Office Word and Microsoft Outlook.

Embedded Microsoft Windows Workflow throughout enables electronic processes and approvals and ensures you are alerted to issues as they arise. In conjunction with SharePoint Windows Workflow you can also access a full range of project information, documents and external systems, for example your payroll application.

Retain margin and profitability for every project with TimePoint.



The simplest way to bring projects in on time and on budget is with tight control over resource utilisation and expenditure. TimePoint achieves this, bringing together all project related information with your financial data in one, integrated system with sophisticated reporting tools so you get to see one version of the truth when you need to see it.

Any duplication is eliminated through both integrated processes and controls. For example, web based timesheet entry will shorten the time taken between time & expense entry and recovery. With no data re-keying needed and integration of project detail within timesheets, you can accurately bill projects and reduce the elapsed time between project execution and cash collection.

Most importantly, you will increase project visibility, facilitate communication and decision making with real-time data analysis and reporting tools via dashboard and KPI reporting.

TimePoint features:

Web-based interface for full project control

- Project Summary – including target profit and current profit by percentages
- Revenue and Programme
 - documents fees and revenues for a project (lump sum or time change)
 - ability to enter actual earnings for each month and forecasted earnings for future months as a percentage complete or an actual amount
 - displays cumulative revenue
- Resources and Expenses
 - forecast hours on a project for a resource
 - find resources by location, with hourly cost rate (effective labour rate) and resources and expenses by month, cumulative expenses and resource utilisation
 - only forecast hours can be entered (actual hours are fed into the timesheet system)
 - expense costs by month
- Profit
 - monthly profit, monthly target, cumulative profit
 - live updates
- Disbursements
 - linked to expenses (project costs)
 - billable and cumulative disbursements or add new disbursements by month
- Charting – ability to chart revenue, expenses and profit in user's chosen format
- Project variations
 - deal with on a 'sub project' level

Work Plan ►
 Web-based interface provides visibility and control across the length and breadth of your project.

The screenshot displays the HASSELL Workplan V2.0 web interface. It features several key sections:

- Project Summary:** Shows project details for '002589.001.01 - Workplan Project - Office Tower - Architecture'. It includes fields for PRIOR REVENUE (\$0.00), TOTAL FEE (\$0.00), TARGET PROFIT (20.00%), and CURRENT PROFIT (0%).
- Project Earnings:** A table titled 'FORECAST REVENUE AND PROGRAMME - \$ COMPLETION BY MONTH' with columns for PROJECT STAGE, FEE BY STAGE, PRIOR AMOUNT, PRIOR PERCENTAGE, and monthly actuals for Oct-09, Nov-09, and Dec-09.
- Project Resources And Expenses:** A table titled 'FORECAST RESOURCES AND EXPENSES BY MONTH' with columns for RESOURCE TOTAL, RESOURCE CUMULATIVE, EXPENSE TOTAL, EXPENSE CUMULATIVE, COST TOTAL, and COST CUMULATIVE.
- Project Profit:** A table titled 'FORECAST PROFIT BY MONTH' with columns for PROFIT DETAILS, PRIOR PROFIT, and monthly actuals for Oct-09, Nov-09, and Dec-09.

Callout boxes on the right side of the screenshot identify these sections as: Summary, Revenue, Resources, Expenses, and Profit.

Project management & analysis

- Integrate financial, resource, task, and intellectual capital information to streamline company and project-related resources and improve accuracy
- Track performance to budget and task with two-way matching and KPI reporting
- Define project structure with associated tasks and allocate appropriate resources to eliminate conflicts
- Configure work breakdown structures (WBS) at the company, client, product, and project levels
- Define matrix tables for costs and rates
- Establish billing rules and revenue recognition methods
- Analyse costs and projects (transactions) at any level of detail across the entire organisation.

Process management

- Gain insight into critical business information and trends with consolidated client and project information
- Help ensure that teams follow corporate policies and maintain compliance including implementation of custom Microsoft Windows Workflows
- Adhere to industry best practices, client standards, and government regulations
- Centralise the management of and access to critical company information
- Define accounting structures
- Drill down to any level of detail

Financial management

- View client, contract, budget, and project management details to monitor profitability and avoid cost overruns
- Automate approval processes for documents and line items
- Streamline processes for cash advances, travel advances, and credit card reconciliation
- Track estimated versus actual costs.

Document and intellectual capital management

- Reduce the loss of valuable intellectual capital due to employee attrition
- Provide team members with access to intellectual capital and consolidated project information.

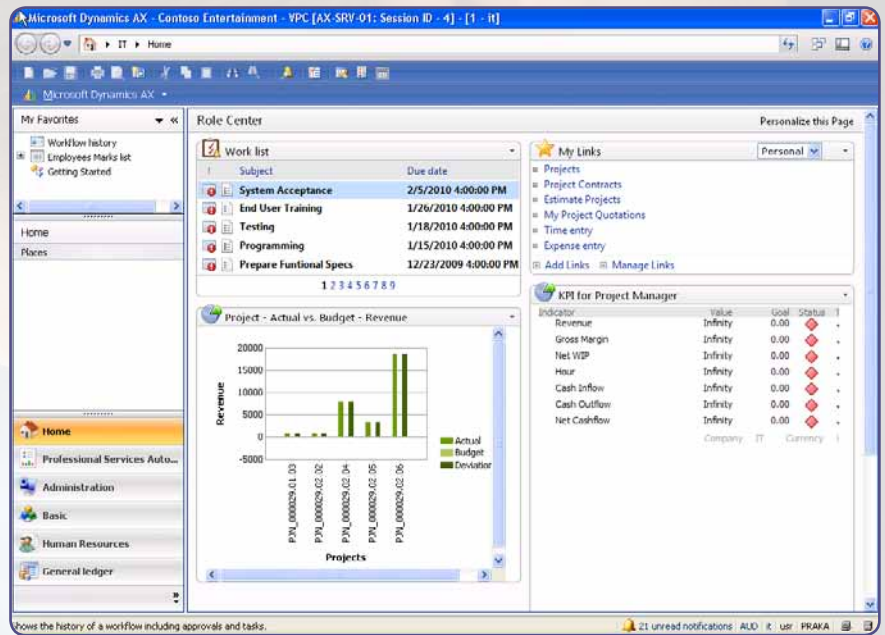
Client profile archives

- Archive and retrieve historical staffing plans, out-of-pocket estimates, and budget reconciliations.

Project billing, Time & Expense Entry

- Web based time and expense entry directly against project or multiple projects.
- Manage supplier and client agreements
- Define recognition at the company, client, or project level
- Pre-configure rules for percent complete, completed contract, time and materials, and fixed fee
- Manage resource utilisation and reduce non-billable time with web based time sheet entry
- Integrated time, billing, expense and reporting allows ad hoc reporting and analysis of resource utilisation.

Project Master provides visibility of all information related to a project, both at a summary and detailed transaction level, with the ability to drill down to source documents.



▲ **KPI Dashboard** Manage your project KPI's and identify performance trends in real-time

Multi-company, multi-currency, multi-lingual support

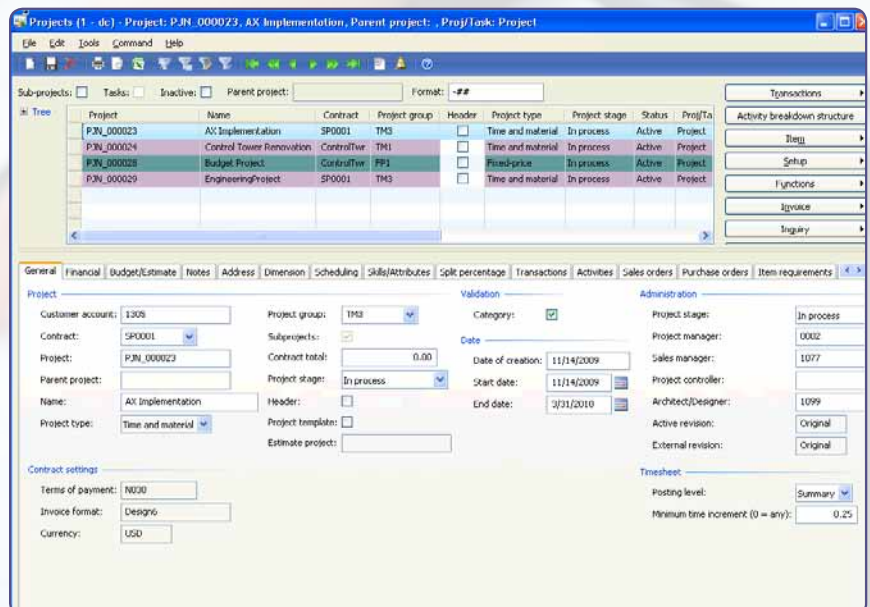
- Operate across countries, languages, and currencies
- Track financial transactions throughout your business.

Integration with familiar software

- Use familiar productivity software, including Microsoft Office Excel and Microsoft Office Word
- Direct integration with Microsoft Project Server for project planning
- Streamline financial processes with Microsoft Dynamics AX general ledger, purchasing, and receivables applications.

Additional capability

- Allows HR management with skills and competencies, tickets, recruitment, induction, training, performance appraisals and HR self service.



Why is TimePoint the best choice for your organisation?

Choosing a 100% Microsoft solution built on the Microsoft Dynamics AX platform means you get the best of both worlds; deep functionality built specifically for project control, matched with robust and scalable technology.

- Delivered on 100% Microsoft technology – builds on your existing IT investments
- Integrates directly with other Microsoft productivity tools – Microsoft Project Server, Microsoft Office, Microsoft Outlook
- Looks familiar and is easy to use – reduces training burden and ensures early adoption by end-users
- In-built compliance and QA platform – out-of-the-box Compliance Centre combined with Windows Workflow simplifies compliance with international regulations such as Sarbanes-Oxley (SOX)
- Simple access to information – single database for single point of data entry
- Flexible structure allows customisation – at user level, at company level or enterprise level depending on your unique requirements
- Quick to implement and go-live with a history of successful projects and implementations
- Scalable to grow with your business – tested from 4 to 3000 users with a range of deployment options.

Eclipse & Microsoft: the right partnership

Eclipse was awarded 2010 Worldwide Microsoft Dynamics AX Partner of the Year. Ranked in the top 10 of Microsoft Dynamics partners globally, Eclipse sits on the Product Advisory Board for Microsoft Professional Services Solutions.

As a multi-award winning implementation specialist, Eclipse is dedicated to delivering intelligent solutions with old-fashioned service.

With almost 400 resources and offices across the world, Eclipse has long-term credibility in delivering software implementations that meet both market needs and individual customer expectations. It is the quality of the consulting team and a proven delivery methodology that ensure consistent project delivery for every implementation.

To be successful, Eclipse has brought together an internal skill set of Microsoft developers, resource sector and project experts, application consultants and market research to ensure TimePoint – Management is both market appropriate and functionality rich.

Support with Substance

Our relationship is dedicated to your success.

Our Support Centre is based in Melbourne with a team of professional consultants operating your 24 x 7 Help Desk. Unlimited phone calls and emails are answered within a 15 minute response time and are logged in our 'CANDO' support system.

When your call is closed, you'll be asked for your feedback to ensure complete transparency of your support experience. This recipe has ensured the success of many implementations, solution upgrades and the long-term satisfaction of over 1000 installed customers.



For more information, contact Eclipse

1300 660 471

www.eclipsecomputing.com.au/timepoint



0800 472 962

www.eclipsecomputing.co.nz/timepoint



+1 604 899 6092

www.eclipsecanada.ca/timepoint



+67 9 330 5466

info@eclipsecomputing.com.fj



The TimePoint™ trademark is the property of Eclipse Computing (Australia) Pty Ltd

Microsoft™, Microsoft Dynamics™, Microsoft SQL Server™, Microsoft SharePoint™ and Microsoft PerformancePoint™ are registered trademarks of Microsoft Corporation