



eclipse  
A UXC COMPANY



S U P P L Y POINT™

## The integrated ERP solution for smart distributors

Offering advanced features as standard, SupplyPoint delivers multi-warehouse distribution, hand held scanning functionality for receipt, put-away, move, pick, pack and dispatch, eCommerce storefront, EDI, GS1, lot and expiration date handling, random weight, manufacturing, customer relationship management and many other fully-integrated features included 'out-of-the-box' that you won't find in other solutions.

“ We can now consolidate information from four major wineries across the country into one system, accessible by anyone needing information, anywhere, anytime. ”

*Rick Pelletier, Project Manager  
Rathbone Wine Group Pty Ltd*

# Supply Chain Challenges?

As a wholesale or retail distribution company, you're faced with real challenges in the supply chain.

Your documentation in the warehouse isn't keeping up with the product flow.

Your manual paper work isn't processed fast enough to keep up with your receipt, dispatch, pick-put & move process. It's time consuming and flawed, with errors leading to the wrong products being dispatched and the high costs of return and product re-supply.

You're dealing with large customers (or you wish you could) who demand you comply with their EDI requirements and dispatch regulations.

Batch tracking and expiration control is another headache.

You could be missing out on new sales opportunities if you don't have an eCommerce Storefront, or one that isn't integrated with your inventory and warehouse systems.

## Do any of these challenges seem familiar?

**SupplyPoint powered by Microsoft Dynamics NAV** is a fully integrated software solution designed to support the requirements of your distribution business, with lower overheads, more functionality and more automated processes, to deliver what you need from the supply chain.



## Benefits

- Increases revenue opportunity via web sales and EDI capabilities
- Builds competitive advantage through best practice business process
- Sets up organisation ready for business growth
- Reduces stock returns and increases customer satisfaction from supplying right goods
- Increases stock turns, reduces stock levels and delivers better capital utilisation
- Better stock integrity
- Improves productivity as less time wasted looking for stock
- Reduces non-value added activities
- Improves delivery turnaround and product flow throughout the business
- Improves space utilisation



# Why is SupplyPoint the best choice?

## Deep functionality suites with a modular structure

Built on Microsoft Dynamics NAV, SupplyPoint handles all the complexities of Australia and New Zealand's supply chain environment without leaving anything off your functionality 'wishlist'.

Using a single software solution for all your business processes means that finally all your data is kept in one place – from customer data to lot numbers. You'll also save time and money supporting only one, rather than multiple systems with no interfaces between systems required.

SupplyPoint features include:

### Warehouse

- Multi Site Warehousing (Multiple Locations)
- Inbound Warehouse Handling
- Outbound Warehouse Handling
- Multi Zone Warehousing
- Directed Pick and Put-away
- Warehouse optimisation, movement planning and bin replenishment
- Scanning (Paperless Warehouse)
- 3PL - Managing storage and handling charges
- 3PL - EDI integration to partners

### Sales

- Marketing
- eCommerce Storefront
- EDI Compliance
- GS1 Integration
- Point of Sale (POS)
- Pricing and Discounts
- Rebates
- Giveaways
- Promotions
- Loyalty Programmes
- Back Order Management & Item Substitution
- Related Products
- Lot & Serial Traceability
- Expiration Dates
- Random Weight

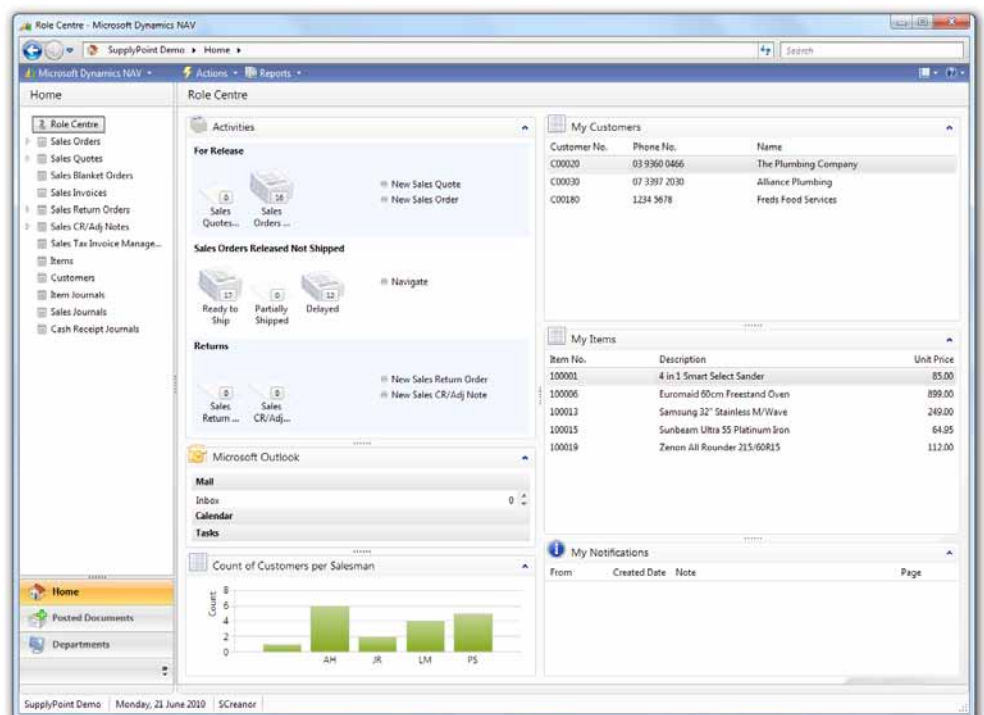
### Stock & Purchasing

- Demand Forecasting and MRP
- Landed Cost
- Stocktake including cycle counting

Delivered by Eclipse, SupplyPoint has been developed as the 100% Microsoft based alternative ERP solution, offering deep functionality, robust and scalable deployment options and a quality implementation framework uniquely suited to distribution based companies.

### ▼ Role Centre for Sales Processing

Present your team with a custom tailored view based on their specific role within your organisation. The Role Centre allows configuration to suit the specific requirements of your users, providing an overview of all required information from one screen.



## Best practice replaces manual processes

SupplyPoint is built on a 'best practice' model that has been tried and tested in many supply chain businesses across Australia and New Zealand. SupplyPoint doesn't rely on a 'one size fits all' philosophy. It has been developed from extensive industry experience combined with our Eclipse consultants' knowledge and our customers' feedback.

We've built 'best practice' into our SupplyPoint model so that you don't have to reinvent the wheel. For example, you can replace difficult, manual processes (such as the management of price and discount structures) with SupplyPoint's sophisticated yet easy to manage pricing and discount matrixes.

For example; Price and Discount groups or specific pricing and discounts can be applied to nominated customers, Pricing and Discounts can be applied together or exclusively and 'effective dates' provide pre-load capabilities for Price and Discount changes. SupplyPoint can even manage your eCommerce Storefront and deliver a truly integrated solution.

All data on your Storefront will be supplied directly from SupplyPoint with no manual intervention.

Any changes made to your SupplyPoint data will be visible in 'real-time' to your website. This includes; inventory, pricing, customer contact details (including ship to address, pick up & delivery information).

## Build high customer satisfaction into your business

Customer satisfaction isn't just the concern of retail businesses. Ensure your business is easy to deal with from front office to back office by removing manual tasks and implementing efficient business processes to make you the supplier of choice.

In the front office, SupplyPoint offers deep marketing and sales functionality such as: management of giveaways, promotions, loyalty programmes and back order management. These are often manual processes that are time consuming and difficult to administer, but add value to your customers.

Other features such as the management of item substitution, related products, lot and serial traceability and management of expiration dates ensure your customers reduce wastage and returns.

In the back office, SupplyPoint offers warehousing functionality that will transform your turnaround times and remove inefficiencies and manual processes from your operation. You'll even be able to identify fast moving inventory and ensure it's as close to the shipping bay as possible!

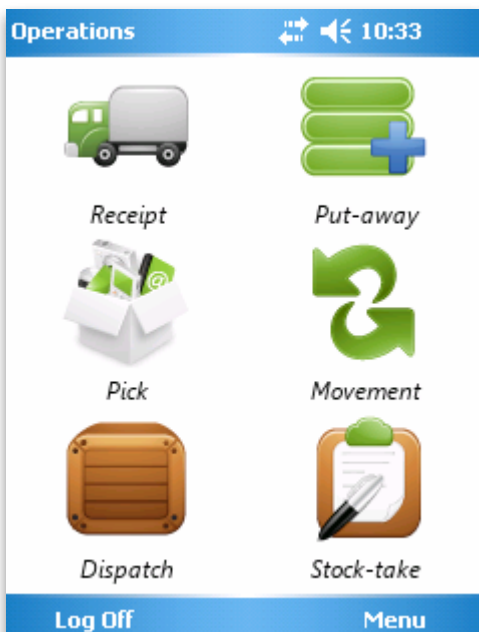
With demand forecasting and MRP capabilities, SupplyPoint will put you back in control of your stock and ensure you're able to meet your customer demand.

## Realise warehouse efficiencies

SupplyPoint offers deep warehousing functionality that delivers on the promise of ERP efficiency.

Features include:

- **Multi-site warehousing** – handle stock in multiple warehouses and maximise buying power with central purchasing
- **Inbound warehouse handling** – optimise the receipt process and simplify documentation with a 'warehouse interface' that manages all in-bound documents
- **Outbound warehouse handling** – manage warehouse dispatch and achieve complete visibility and tracking of goods
- **Multi-zone warehousing** – maintain strict control over storage requirements and optimise storage capacity and stock levels and reduce the double handling of goods
- **Directed pick and put-away** – use 'put-away logic' and setup & bin capacity processes and then find your products more easily and limit lost inventory and incorrect picks
- **Warehouse optimisation** – automated pick-face replenishment from bulk storage area
- **Scanning** – achieve a paperless warehouse with scanning for: receipt, packing & dispatching, pick, put, move and stock-take.



### ◀ Scanning Menu

Empower your warehouse operators with real time information where they need it. Accessing and processing information via wireless handheld scanning devices. Receipt and dispatch goods as you stand right next to them. Pick, put, move and stock-take on the warehouse floor, without the need to return to the office or a terminal to update your system.



## Why is SupplyPoint the best choice?

### Out-of-the-box compliance

In today's market place, our major retailers demand efficiency and compliance with their business processes. This can be a time consuming, costly but essential part of doing business. To keep you and your large customers happy, SupplyPoint offers EDI compliance and GS1 integration 'out-of-the-box'.

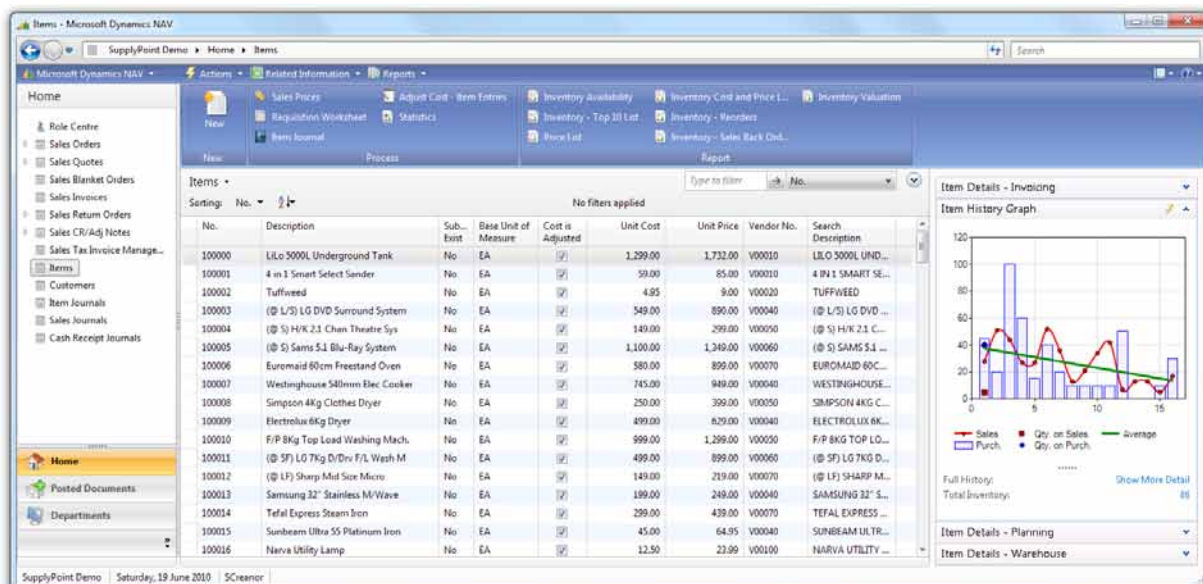
SupplyPoint's:

- **EDI compliance includes;** order import, acknowledgement and confirmation, advanced shipping notice including SSCC labeling and e-invoicing or recipient created tax invoices.
- **3PL storage and handling includes;** calculation, processing and invoicing of 3PL charges.
- **3PL integration to partners includes;** electronic upload of item information, customer information and sales order information
- **GS1 integration ensures;** all information is compliant as part of inventory management, automated data import into GS1 and automated data export from GS1 for product information.

### Looks familiar and is easy to use

SupplyPoint looks like and integrates with the familiar Microsoft Office and Microsoft Outlook tools, making accessing information easier than ever before. It also minimises training requirements and speeds up the adoption of the system so that you gain the benefits faster. That means less training and development time and a quicker return on your investment.

This is particularly important when you have multiple sites across the country and you want to minimise roll-out costs. SupplyPoint's Microsoft interface and direct integration with Microsoft Desktop tools, such as Microsoft Word, Excel and Outlook, provides a familiar working environment for new users.



◀ **Role Centre with Smart Graphing**  
Quickly and easily analyse data tailored to suit your role in the organisation. For example, compare changing trends in purchase and sales histories against currently available inventory, all from a single, customised view.

## Simple access to all information

SupplyPoint uses a single database to store all your information. This simplifies information handling; data is only entered once and also provides a range of reporting options, including: Financial Reporting, Ad Hoc Reporting, Multidimensional Reporting & Analysis and Business Scorecards.

End users can access information using familiar Microsoft navigation. Simple enquiries can be made via direct 'drill down'. Ad Hoc Reporting allows users to create, view, and save reports for their own individual information analysis requirements.

There is a range of standard Financial Reports and predefined reports, accessed via the Report Wizard, which let you create precision production reports.

Multidimensional Reporting and Analytics features enable users to efficiently aggregate and analyse business metrics across core business dimensions to gain a deeper business insight into business trends and drivers.

Through tight integration with Microsoft SQL Server, Microsoft Office SharePoint Server, Jet Reports, ZAP and Microsoft Office PerformancePoint Server 2007, SupplyPoint can deliver a range of advanced reporting and Business Intelligence features.

## Flexible structure allows customisation for your unique requirements

SupplyPoint has been developed to meet the broadest needs of wholesale and retail distributors and supply chain businesses, but not all operations run in the same manner. If you have specific business processes that differentiate your operation and provide strategic advantage, these can be identified, scoped and built-into SupplyPoint to ensure you have everything you need to run your operation in a single application.

Microsoft Dynamics NAV has a flexible and secure development architecture that allows for site based customisations and modifications without affecting the integrity of the underlying Microsoft Dynamics NAV solution. This means that you can adapt and upgrade your SupplyPoint solution over time with less risk and expense.

**S U P P L Y P O I N T**

Home | Shopping Cart | My Wish List | Best Sellers | Customer Service | Search

Login You have 0 item(s) in your Shopping Cart

Home Categories Departments Manufacturers Customer Service

Bikes → 16-Inch Kettler Pulse Spider Boys Bike

SEARCH

Search:

BROWSE BY DEPARTMENT


- ▶ Appliances
- ▶ Beauty
- ▶ Bed & Bath
- ▶ Books/cds/movies/mp3
- ▶ Computers
- ▶ Decors
- ▶ Electronics
- ▶ Fashion
- ▶ Foods & Wine
- ▶ Furnitures
- ▶ Gifts & Tickets
- ▶ Health
- ▶ Housewares
- ▶ Jewelry & Accessories
- ▶ Sports & Recreations
- ▶ Toys

BROWSE BY CATEGORY

- ▶ Basic Bedding
- ▶ Bikes
- ▶ Body & Skin Care
- ▶ Butcher Shop
- ▶ Cheese
- ▶ Cooling & Heating
- ▶ Desktops
- ▶ Disc Player
- ▶ Electronic Toys
- ▶ Gift Cards
- ▶ Hard drives/Storage
- ▶ Kids Jewelry
- ▶ Lighting
- ▶ Living Room Furniture
- ▶ Magazine Subscription
- ▶ Major Appliances
- ▶ MP3
- ▶ Movies
- ▶ MP3
- ▶ Printers & Fax
- ▶ Riding Toys
- ▶ Rings

### 16-Inch Kettler Pulse Spider Boys Bike

E-mail this product to a friend







View larger image

The Pulse Spider is one cool bike that is sure to spark fond "first bike" memories that will be treasured forever. The Spider has sporty colors and all the cool features that boys love - and best of all, parents will have peace of mind because they know the bike comes fully equipped with safety features. Removable training wheels, padded handlebar, rear coaster brake, hand brake, durable BMX-inspired frame and an enclosed chain are only the beginning to getting the kids off to a safe start. Pneumatic tires, front and rear reflectors and metal fenders make this bike a very cool ride. For a custom fit that ensures proper posture, the padded seat and handlebar are adjustable. Nobody's tougher on bikes than boys, but the Spider is dependable, built to last, and easy to ride.

SKU: 01-0031  
Weight: 5.98  
Price: \$189.99

Quantity:

#### RELATED PRODUCTS

 <p>Kettler Kettrike Jumbo Trike</p>	 <p>Kettler Pulse Girls Bike</p>	 <p>Kettler Classic Flyer Low Rider Trike</p>	 <p>Kettler Kiddio Supreme Stroller Trike</p>
---	---	--	--

**Online Sales Made Easy** ▶  
SupplyPoint's fully integrated web shop gives your customers 24/7 access to your sales force, while ensuring your stock levels are always kept up-to-date.

## Quick to implement and 'go live' in months not years

Eclipse has a history of successful implementations. Our thorough project methodologies ensure that our projects are completed on time and on budget.

As the SupplyPoint solution is modular, you can choose to implement the solution in phases and roll out as much functionality as required to suit your operational needs. Eclipse will help you to scope out your requirements and build a project plan that fits your business.

## The Solution

**Analysis & Reporting, Dashboards and KPI**

**Document Management via SharePoint**

<div style="background-color: #f0f0f0; padding: 5px; text-align: center;"><b>Sales</b> </div> <p><b>Sales</b></p> <ul style="list-style-type: none"><li>▶ Pricing, discount, rebates, promotions and giveaways</li><li>▶ Loyalty Programme</li><li>▶ Back Order Management</li><li>▶ Fresh Food Distribution / Lot and Serial Traceability / Expiration Dates / Random Weight</li><li>▶ EDI compliant (Order import, acknowledgement and confirmation, SSCC, ASN and e-invoice)</li><li>▶ GS1 integration</li><li>▶ Related Products</li><li>▶ DIFOT Reporting</li></ul> <p><b>Marketing</b></p> <ul style="list-style-type: none"><li>▶ Contact Management</li><li>▶ Interaction Management</li><li>▶ Campaigning and Segmentation</li><li>▶ Outlook Integration</li></ul> <table style="width: 100%;"><tr><td style="width: 50%;"><b>Point of Sale</b></td><td style="width: 50%;"><b>WebTrade</b></td></tr><tr><td>▶ POS interface</td><td>▶ Web Shop</td></tr><tr><td>▶ EFTPOS integration</td><td>▶ B2B and B2C</td></tr></table>	<b>Point of Sale</b>	<b>WebTrade</b>	▶ POS interface	▶ Web Shop	▶ EFTPOS integration	▶ B2B and B2C	<div style="background-color: #f0f0f0; padding: 5px; text-align: center;"><b>Warehouse</b> </div> <p><b>Warehouse Management Foundation</b></p> <ul style="list-style-type: none"><li>▶ Multi Site Warehousing</li><li>▶ Distribution planning and Transfer Management</li><li>▶ Inbound Warehouse Handling</li><li>▶ Outbound Warehouse Handling</li><li>▶ Manifest creation and integration options to carrier systems</li></ul> <p><b>Warehouse Management Advanced</b></p> <ul style="list-style-type: none"><li>▶ Multi Zone Warehousing</li><li>▶ Direct Pick and Put-away</li><li>▶ Warehouse optimisation, movement planning and bin replenishment</li></ul> <p><b>Scanning (Paperless Warehouse)</b></p> <ul style="list-style-type: none"><li>▶ Scan Receipt</li><li>▶ Scan Packing and Dispatching</li><li>▶ Scan Pick, Put and Move</li><li>▶ Scan Stocktake</li></ul> <p><b>3PL</b></p> <ul style="list-style-type: none"><li>▶ EDI Integration to partners</li><li>▶ Managing storage and handling charges</li></ul>	<div style="background-color: #f0f0f0; padding: 5px; text-align: center;"><b>Purchase/Stock</b> </div> <p><b>Purchase</b></p> <ul style="list-style-type: none"><li>▶ Demand Forecasting</li><li>▶ Material Requirement Planning</li><li>▶ Landed Cost</li></ul> <p><b>Stock / GS1</b></p> <ul style="list-style-type: none"><li>▶ Stock Master</li><li>▶ Stocktake including cycle counting</li><li>▶ Maintaining the item and GT1N information</li><li>▶ Import and export facility to GS1</li><li>▶ Material requirement planning</li><li>▶ Landed cost</li></ul> <div style="background-color: #fff9c4; padding: 10px; margin-top: 10px;"><ul style="list-style-type: none"><li>✓ Multi-Company Support</li><li>✓ Flexible Development Environment</li><li>✓ SQL Backend</li><li>✓ 3 Tier ERP</li></ul></div>
<b>Point of Sale</b>	<b>WebTrade</b>							
▶ POS interface	▶ Web Shop							
▶ EFTPOS integration	▶ B2B and B2C							

**Financial Management**

<ul style="list-style-type: none"><li>▶ Multi Company, Inter-Company &amp; Consolidation</li><li>▶ General Ledger, Account Receivables, Account Payables &amp; Banking</li></ul>	<ul style="list-style-type: none"><li>▶ Budgeting and Forecasting</li><li>▶ Asset Management</li></ul>
--	--



For more information, contact Eclipse

1300 660 471  
[www.eclipsecomputing.com.au/supplypoint](http://www.eclipsecomputing.com.au/supplypoint)



0800 472 962  
[www.eclipsecomputing.co.nz/supplypoint](http://www.eclipsecomputing.co.nz/supplypoint)



The SupplyPoint™ trademark is the property of Eclipse Computing (Australia) Pty Ltd

Microsoft™, Microsoft Dynamics™, Microsoft SQL Server™, Microsoft SharePoint™ and Microsoft PerformancePoint™ are registered trademarks of Microsoft Corporation